

Weighing structural damage and social susceptibility:

A decision-making tool to perform longitudinal studies of geographically large hazards events

Blythe Johnston



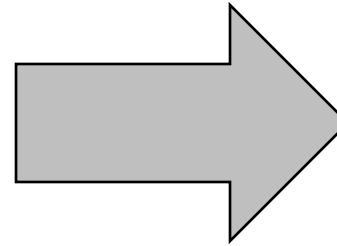
NIST CENTER FOR RISK-BASED COMMUNITY RESILIENCE PLANNING



Designing the Social Susceptibility Metric to Predict Specific Outcomes

Factors considered for inclusion in the predictive metric

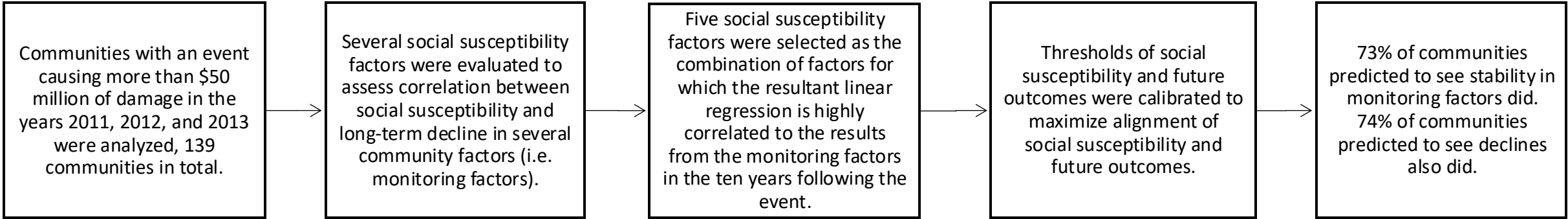
- 1 - Educational Attainment
- 2 - Median Income
- 3 - Race
- 4 - Ethnicity
- 5 - Rental Tenure
- 6 - Occupancy Rate
- 7 - Median Age
- 8 - Population Density
- 9 - Rurality
- 10 - Event Cost
- 11 - Scaled Value for Event Cost
- 12 - Community Self-Perception
- 13 - Racial Affinity Groups
- 14 - Family Ties
- 15 - %Less than HS
- 16 - % Population 65+
- 17 - %Limited English Households
- 18 - %Population Below Poverty Line
- 19 - %Unemployed in Labor Force
- 20 - %Female Unemployed
- 21 - %Single Parent Households
- 22 - Mobile Homes as % of HUs
- 23 - %owner occupied
- 24 - % Households w/o vehicle
- 25 - GINI Index
- 26 - Number of Healthcare professionals per 1,000 residents



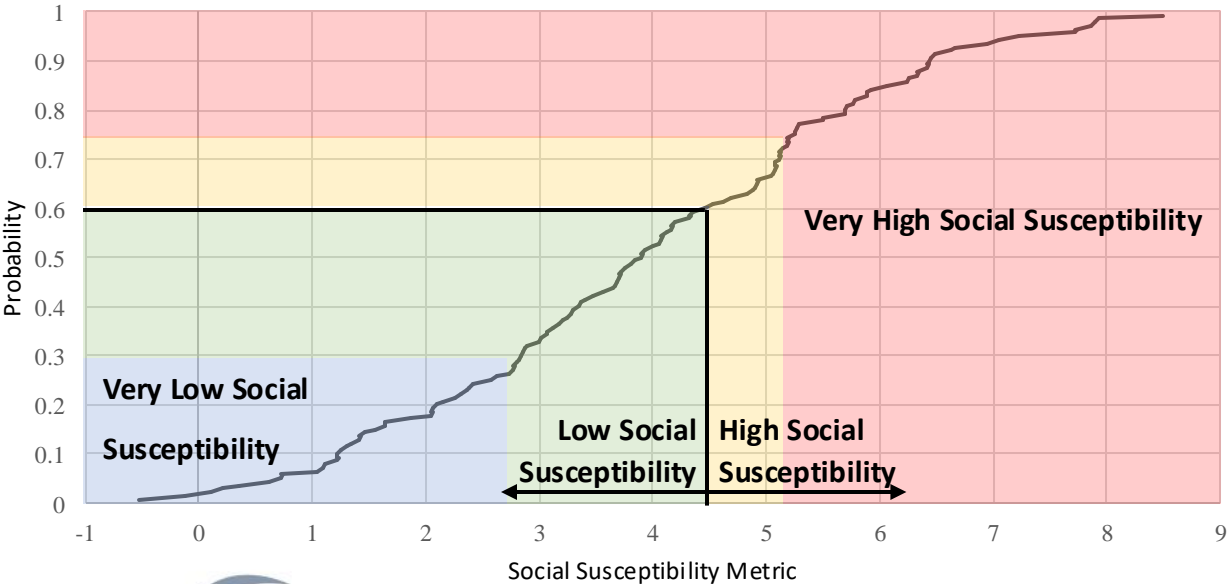
Monitoring factors which the linear fit model was being trained to predict

Median Household Income
Population
Educational Attainment
Number of Households
Number of Housing Units

A Protocol for Community Selection: Assessment of Social Susceptibility



Social Susceptibility Probability for 139 Communities



Social Susceptibility Status	Predicted Outcome Based on Social Susceptibility Only
Very Low	Marked Stability
Low	Stability
High	Decline
Very High	Marked Decline

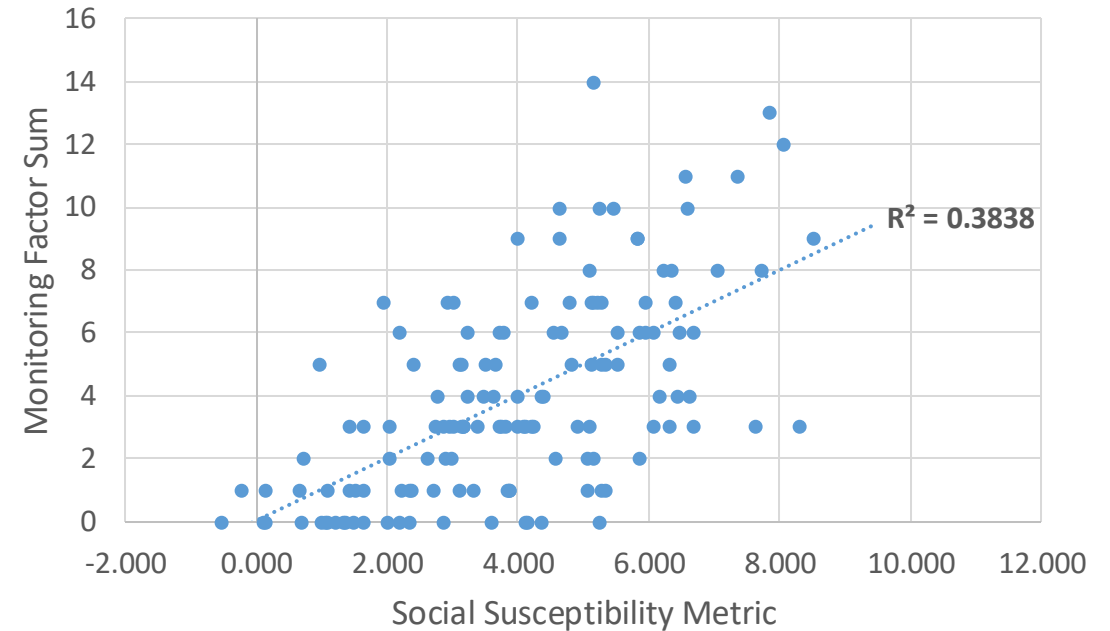
Creating Outcome Tiers for Generating Representative Datasets

Social Susceptibility Tiers	Outcome Tiers	Score Range		Meaning of Outcome Tiers in the Years Following the Event	
		Predictive Factors	Monitoring Factors	Post-Event Monitoring Factors with Partial Negative Trends (Not Sustained)	Post-Event Monitoring Factors with Sustained Negative Trends
Very Low	Marked Stability	≤ 2.75	≤ 1.5	At most 1 factor	None
Low	Stability	≤ 4.4	≤ 3.5	At most 3 factors	At most 1 factor
High	Decline	> 4.4	> 3.5	More than 3 factors possible	More than 1 factor possible
Very High	Marked Decline	> 5.15	> 5.5	All 5 factors possible	At least 1 factor, More than 2 factors possible

The Resultant Metric

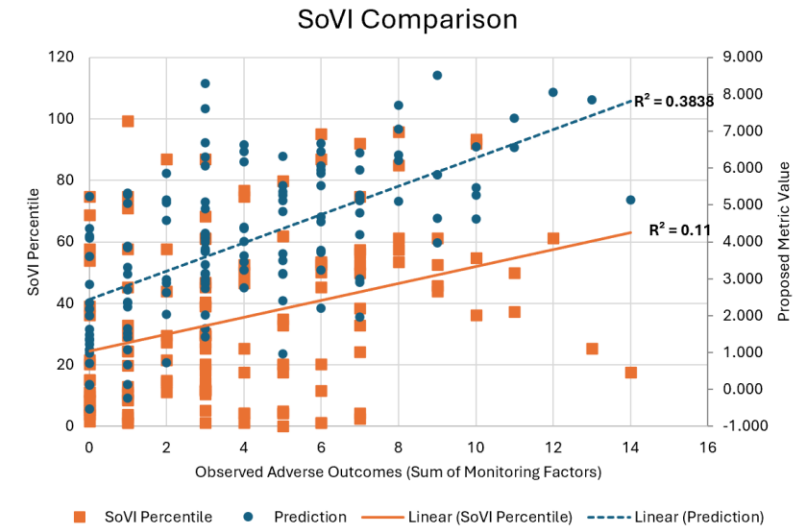
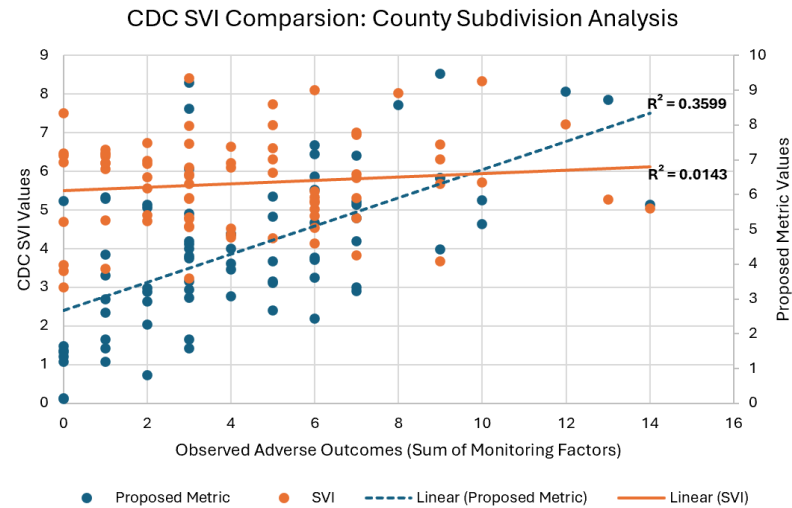
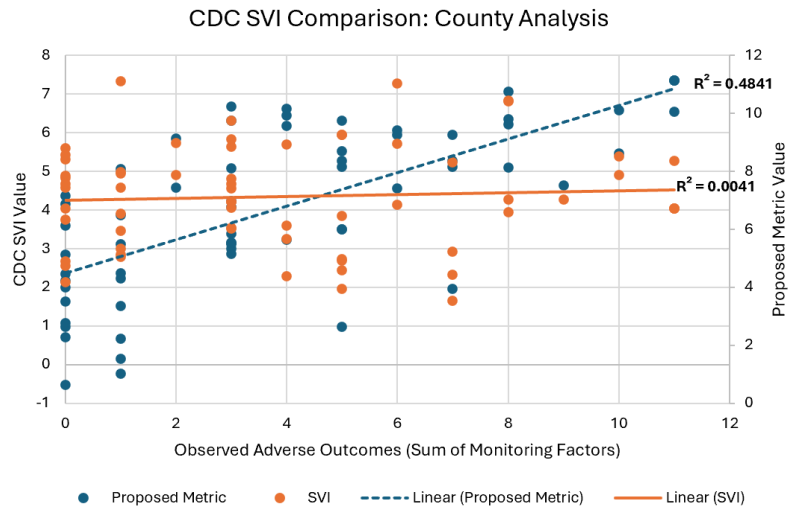
Factors Selected For Predictive Metric

po - % Population 65+
le - % Limited English Households
sp - % Single Parent Households
hv - % Households w/o vehicle
gn - GINI Index

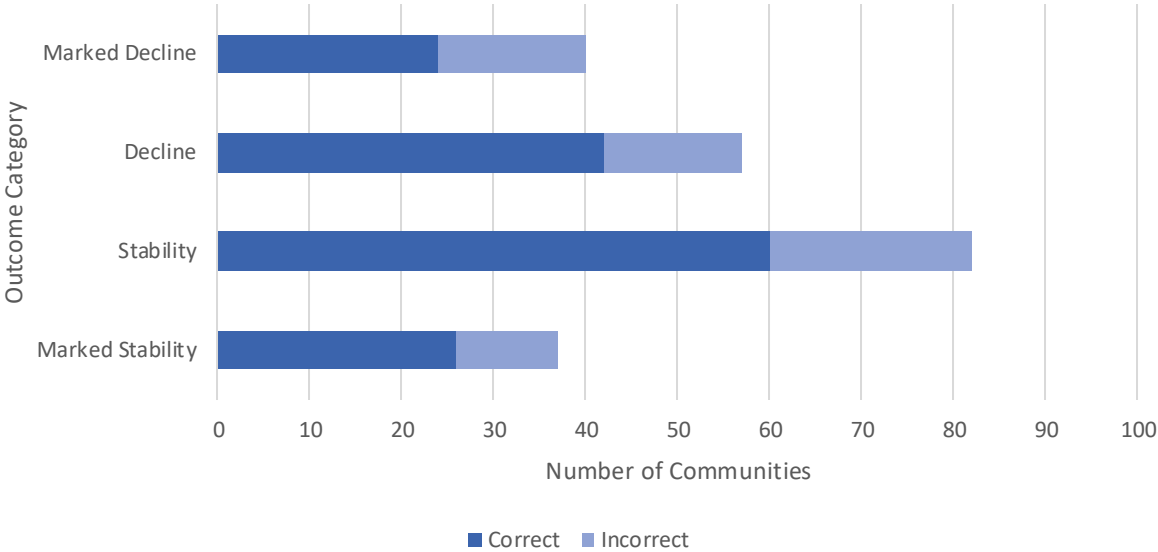
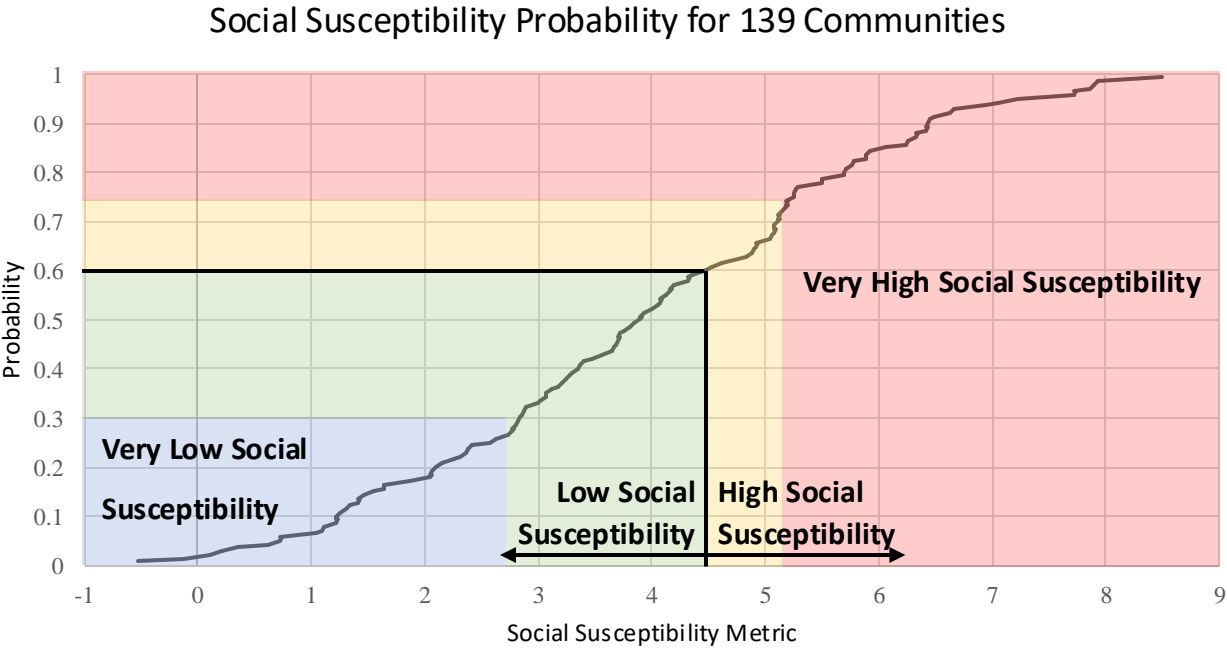


$$SSM = 1.3714 + 4.6717po - 1.9664le + 2.2459sp + 2.3505hv - 1.8548gn$$

How This Resultant Metric Compares



Binning: Creating Outcome Tiers

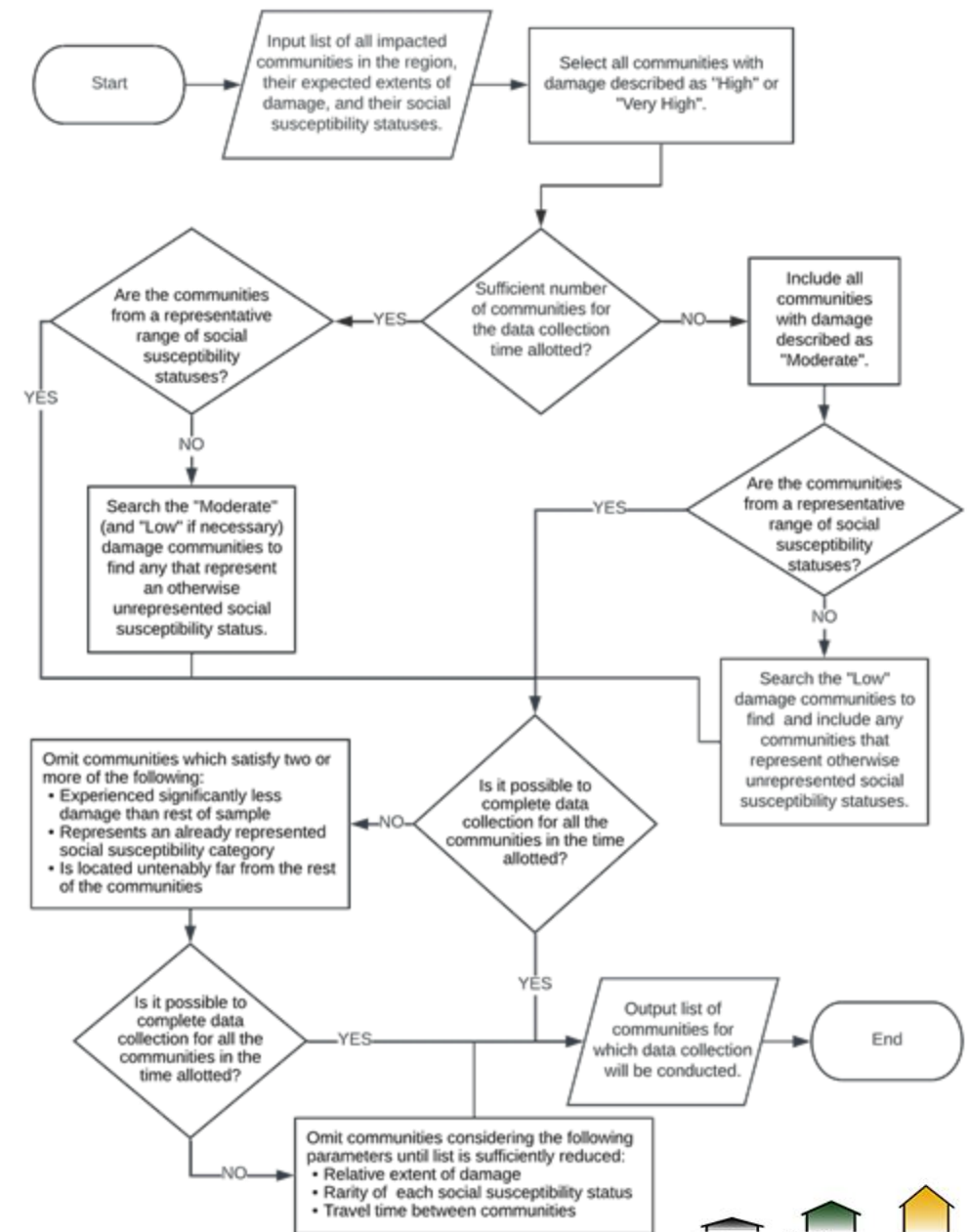


73% of communities predicted to see stability in monitoring factors did.
74% of communities predicted to see declines also did.

Development of a Companion Decision-Making Tool

This tool helps select communities based on:

- Representativeness of social susceptibility outcome tier
- Extent of damage expected or preliminarily documented
- Efficient use of resources available



Limitations and Next Steps

The metric may benefit from further disaggregation of outcomes so that the mechanisms behind recovery can be investigated.

The outcomes outlined here are summary statistics for the community, so concerns regarding equity and dispersion patterns of outcomes remain an area of investigation. This is part of the reason why the metric is not termed a vulnerability or resilience metric.

This metric has been developed for a specific application. Implementation in other applications would need greater investigation to determine appropriateness.

The field study that initially implemented this work will conclude this December, and the data from this field study is actively being processed to determine building recovery patterns to further validate this metric.

